



8 0 3 7 3 5 6
 Tx:6017969
2011R-008910
 RECORDED ON
 03/25/2011 4:41:38 PM
 SALLY REYNOLDS
 REGISTER OF DEEDS
 LIVINGSTON COUNTY, MI 48843
 RECORDING: 34.00
 REMON: 4.00
 PAGES: 9

9

NICHWAGH RIDGE CONDOMINIUM

FIRST AMENDMENT TO MASTER DEED

On this 15th day of September, 2003, OLG Development, L.L.C., a Michigan limited liability company, whose address is 13139 Galway Court, South Lyon, Michigan 48178, Developer of Nichwagh Ridge Condominium, a condominium project established pursuant to the Master Deed thereof recorded in Liber 4102, Page(s) 0316-0386, inclusive, Livingston County Records, and known as Nichwagh Ridge Condominium, Livingston County Subdivision Plan No. 286, hereby amends the Master Deed of Nichwagh Ridge Condominium pursuant to the authority reserved in Article VIII of said Master Deed. Said Master Deed is amended in the following manner:

FIRST AMENDED ARTICLE IV OF THE MASTER DEED
 OF NICHWAGH RIDGE CONDOMINIUM

ARTICLE IV
COMMON ELEMENTS

Section 3. Responsibilities. The respective responsibilities for the maintenance, decoration, repair and replacement of the Common Elements and Units are as follows:

- (a) Co-owner Responsibilities.
 - (i) Units, Dwellings and Adjacent Road Right-of-Way. It is anticipated that separate residential dwellings will be constructed within the Units depicted on Exhibit B hereto. Except as otherwise expressly provided, the responsibility for and the costs of maintenance, decoration, repair and replacement of each Unit, any dwelling and other related structures constructed within the Unit and the road right-of-way area between the Unit and the edge of pavement shall be borne by the Co-owner of the Unit which is served thereby; provided, however, that the exterior appearance of the dwellings, to the extent visible from any other dwelling or Common Element in the Project, shall be subject to reasonable aesthetic and maintenance standards prescribed by the Association in duly adopted rules and regulations. Failure of any Co-owner to adhere to such maintenance and aesthetic standards shall entitle the Association to enter upon such Co-owner's Unit and to perform the necessary maintenance, decoration, repair or replacement in accordance with the provisions of Article VII, Section 4 of this Master Deed.
 - (ii) Utility Services. All costs of installation and operation of lateral lines for gas, electricity and any other utility services and all costs of service to the Unit shall be borne by the Co-owner of the Unit to which such services are furnished.
- (b) Association Responsibilities for General Common Elements. The costs of maintenance, repair and replacement of all General Common Elements, including without limitation, the storm water system, the three (3) Detention Ponds, the Parks, Community Sewage Disposal System, the Landscaping and Entranceway, and all roads within the Condominium, shall be borne by the Association. In the event that the Association fails to provide adequate maintenance, repair or replacement of the general common elements, including without limitation, the storm water system, the three (3) Detention Ponds, the Parks, the Community Sewage and Disposal System, the Landscaping and Entranceway, and all roads within the Condominium, such that the Township of Green Oak and/or the County of Livingston, proceeds with the necessary maintenance, repair or improvements then the costs thereof together with the cost of a reasonable administrative fee may be assessed against the co-owners on the Township tax rolls and collected the same as all other taxes are collected. This provision may not be amended without the expressed written consent of the Township.

- (c) Association Responsibility for Units and Dwellings. The Association shall not be responsible for performing any maintenance, repair or replacement with respect to residences and their appurtenances located within the Condominium Units. Nevertheless, in order to provide for flexibility in administering the Condominium, the Association, acting through its Board of Directors, may undertake such other regularly recurring, reasonable uniform, periodic exterior maintenance functions with respect to dwelling constructed within any Unit boundaries as it may deem appropriate (including, without limitation, lawn mowing, snow removal, tree trimming and exterior painting). Nothing herein contained, however, shall compel the Association to undertake such responsibilities. Any such responsibilities undertaken by the Association shall be charged to any affected Co-owner and collected in accordance with the assessment procedures established under Article II of the Bylaws.
- (d) Community Sewage Disposal System. Nichwagh Ridge is serviced by a certain community septic system (the "System"). The Association will be responsible for the operation, maintenance, repair and replacement of the System. The Developer has entered into a certain Agreement for the construction, operation and maintenance of private sanitary sewer system ("Sewer Agreement") which imposes certain obligations on the Developer and the Association in connection with the System. All obligations under the Sewer Agreement shall be assumed by the Association unless otherwise provided in the Agreement. With respect to the Community Sewage Disposal System, the Association shall also be responsible for the following:
- (i) Monthly inspections, sampling and testing;
 - (ii) Establishment of a capital fund for replacement of any needed components of the Community Sewage Disposal System;
 - (iii) Minor repairs;
 - (iv) Electric power;
 - (v) Telephone service (including the cost of the line at the Township); and
 - (vi) A reasonable administration fee to Green Oak Township related to their monitoring of the System.

The Association must maintain a "Maintenance Reserve" of \$7,200.00. The monies for these funds shall be invested in interest-bearing accounts and should these balances be drawn below the afore-mentioned minimums, they should be replenished in a very short time. The Association must also be reasonably working toward a "Replacement Reserve Fund" of \$60,000.00 to be accumulated over 20 years.

The Association shall provide the Township with the following:

- (a) Copies of all invoices and proof of payment related to the operation of the System;
- (b) Annual reports of receipts, disbursements and cash balances related to the System;
- (c) Annual copy of the maintenance contract with the System's operator and qualifications as applicable; and
- (d) Annual notice of officers of the Association, including telephone numbers.

FIRST AMENDED EXHIBIT A - BYLAWS

ARTICLE VI
RESTRICTIONS

Section 2(b) Restrictions and Requirements. The following restrictions and requirements shall apply to every Unit in the Condominium, and no structure shall be erected, constructed or maintained on any Unit which violate such restrictions and requirements, except to the extent any nonconformity has been waived by the Developer pursuant to Section (f) below:

(1) All elevations shall be traditional in style of superior quality. Each ranch style dwelling (determined to be such by the Developer) must have a minimum livable floor area of two thousand four hundred (2,400) square feet; each one and one-half (1 1/2) story dwelling (determined to be such by the Developer) having a master bedroom on the first (1st) floor must have a minimum livable floor area of two thousand five hundred (2,500) square feet; and each two story dwelling must have a minimum livable floor area of two thousand eight hundred (2,800) square feet. For purposes of this Section, garages, patios, decks, open porches, entrance porches, terraces, basements, lower levels, storage sheds and the like shall be excluded in determining the livable floor area, whether or not they are attached to the dwelling. Enclosed porches shall be included in determining the livable floor area only if the roof of the porch forms an integral part of the roof line of the main dwelling.

FIRST AMENDED EXHIBIT B TO MASTER DEED
OF NICHWAGH RIDGE CONDOMINIUM

Sheets 3, 4, 5, 6, 7, 8 of 8 of the Condominium Subdivision Plan of Nichwagh Ridge, as attached hereto, shall, upon recordation in the office of the Livingston County Register of Deeds of this Amendment, replace and supercede the originally recorded sheets 3, 4, 5, 6, 7 and 8 of 8 of the Condominium Subdivision Plan of Nichwagh Ridge, and the aforescribed originally recorded sheets shall be of no further force or effect, this Amendment is intended and does hereby only change the name of Nichwagh Circle to Forest Ridge.

In all other respects, other than is hereinabove indicated, the initial Master Deed of Nichwagh Ridge Condominium, including the Bylaws and the Condominium Subdivision Plan, respectively attached thereto, as Exhibits "A" and "B" recorded and amended as aforesaid, is hereby ratified, confirmed and redeclared.

WITNESS:

OLG DEVELOPMENT, L.L.C.,
A Michigan limited liability company,

Margaret A. Tuttle
Margaret A. Tuttle

By: Joe Malecke
Its: Managing Member

**Jean F. Orlikowski, Notary Public
State of Michigan, County of Wayne
My Commission Expires 10/4/2012
Acting in the County of Wayne**

Subscribed and sworn to before me
this 24th day of September, 2003

STATE OF MICHIGAN)
COUNTY OF OAKLAND)

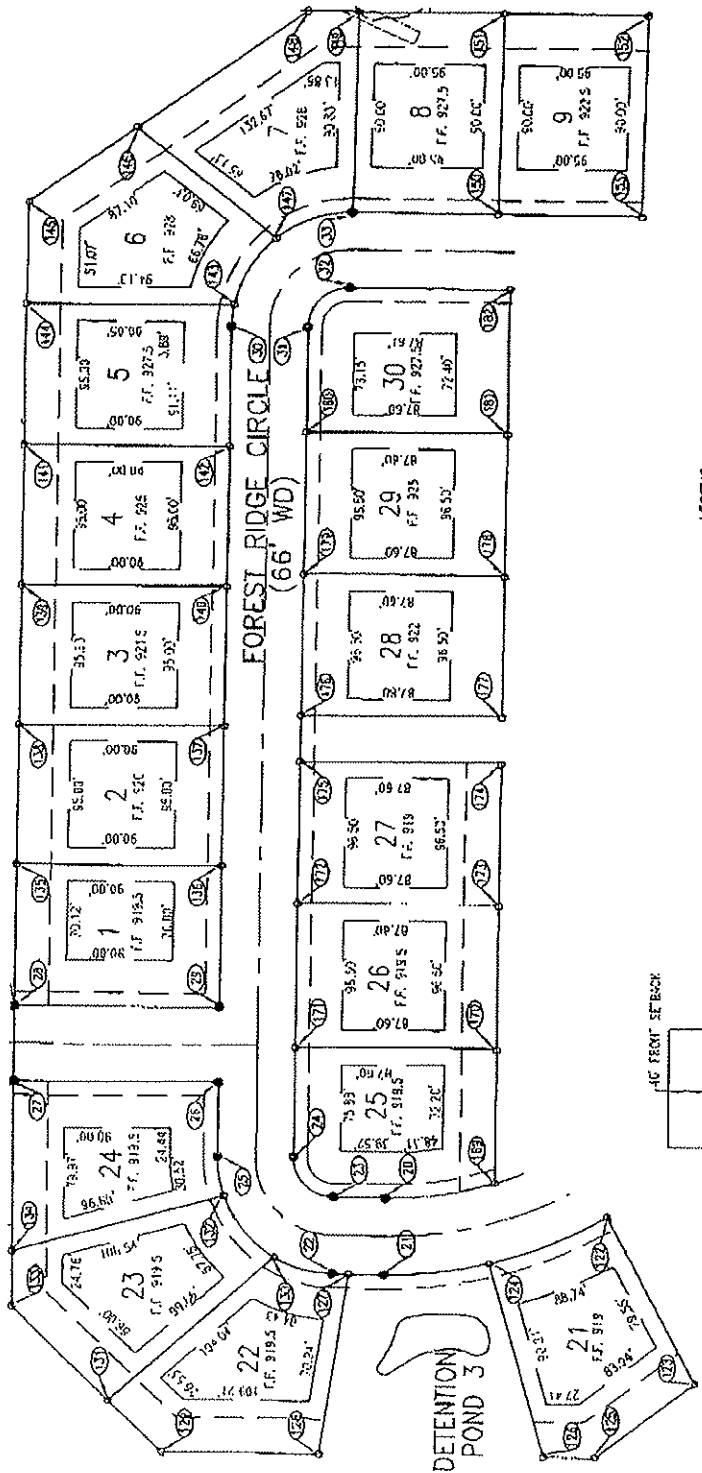
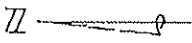
Peggy Anne Majher
Notary Public
County, Michigan

On this 24th day of March, 2011, before me
personally appeared Joseph Malecke of OLG Dev.LLC
and acknowledged the foregoing Master Deed.

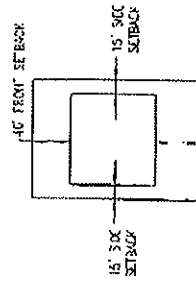
My commission Expires:

Peggy Anne Majher
NOTARY PUBLIC OAKLAND CO., MI
MY COMMISSION EXPIRES Oct 28, 2006
Jean F. Orlikowski Notary Public, Wayne County
acting in Oakland County

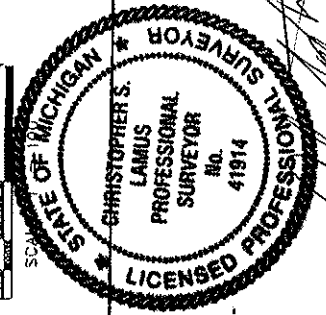
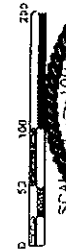
First Amendment to Master Deed
Drafted by and when recorded return to:
Thomas C. Nemes, Esq.
Nemes & Anderson, P.C.
26050 Orchard Lake Road, Suite 300
Farmington Hills, MI 48334
(248) 442-3300



LEGEND
 REMAINING
 EXIST. ROAD



MAXIMUM COVERAGE OF 44% OF = 20%
 TYPICAL LOT LAYOUT - (40.5 AC.)



Handwritten signature and date: Christopher S. Lamus, 10/2/00

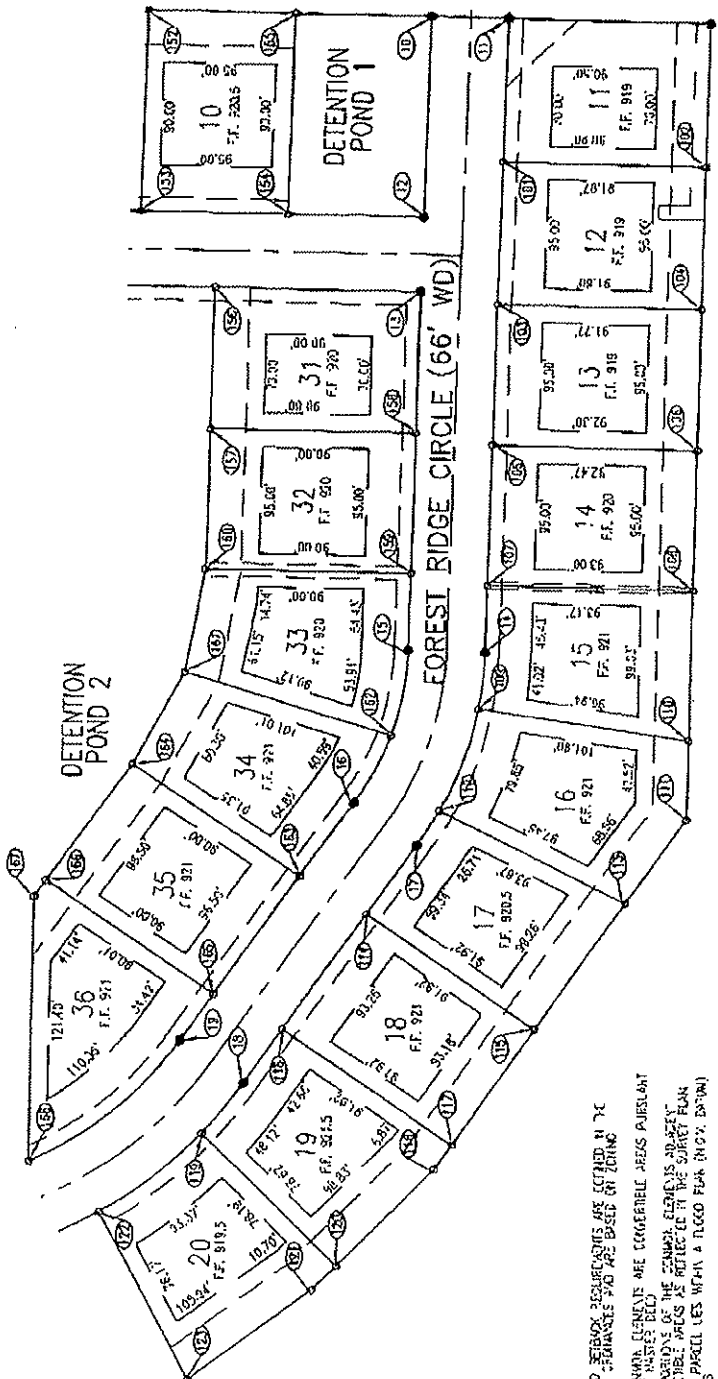
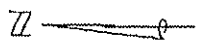
UNIT PLAN
 ORCHARD, HULTZ & MCCLIMENT, INC.
 3033 Schenck Road
 Uxbridge, MI 48180
 (313) 522-6711



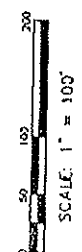
DATE: 10/03/00
 DRAWING No.: 01
 SHEET No.: 5 OF 8
 PROJECT No.: 815-01-014

EXHIBIT "B" TO THE MASTER DEED OF
 NICHWAGH RIDGE CONDOMINIUM
 LIVINGSTON COUNTY CONDOMINIUM
 SUBDIVISION PLAN NO. 286

CLIENT: O...C. DEVELOPMENT



- NOTES:**
1. BEAR AND SODDARD BEYOND REQUIREMENTS ARE DETAIL IN THE SPECIFICATIONS ATTACHED TO THE CONTRACT AND ARE BASED ON ZONING REGULATIONS.
 2. SEE ALL THE WAY SIGNAGE ELEMENTS ARE CONCRETE REBAR REINFORCED.
 3. UNITS 1-18 AND PORTIONS OF THE COMMON ELEMENTS AND ARET INDICATED ARE CONCRETE. UNITS 19 AND 20 ARE CONCRETE AND STEEL.
 4. A PORTION OF THE PERIMETER WITHIN A TILDED FLOOR (NOT DRAWN).
 5. PERIMETER CONCRETE FOUNDATIONS CONSISTING OF SOLID FLOOR ON STEEL BEAMS, NOT LESS THAN 12" IN THICKNESS AND 36" IN LENGTH ENCASED IN CONCRETE AT LEAST 4" IN THICKNESS. HAVE BEEN SET AT POST'S MASTER PLANS 101.
 6. ALL NECESSARY WORKERS CONSISTING OF 50 D. IRON OR STEEL, 6" DIA. REBAR, 1" DIA. CONCRETE AND 6" DIA. LENGTH HAVE BEEN SET AT POST'S MASTER PLANS (101) AS THROUGH STROK.



UNIT PLAN

EXHIBIT "B" TO THE MASTER DEED OF
NICHWAGH RIDGE CONDOMINIUM
 LIVINGSTON COUNTY CONDOMINIUM
 SUBMISSION PLAN NO. 286

ORCHARD, HULTZ & McCLELLAND, INC.



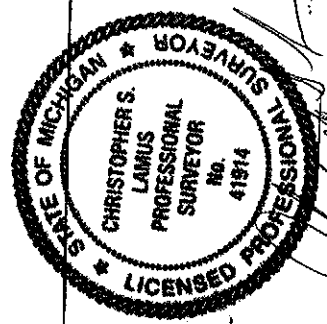
1855 Schoolcraft Road
 Livonia, MI 48150
 (313) 426-8211

DATE: 10/21/00
 DRAWN BY: SK
 ENGINEER: Condo, Inc.

SHEET
 5 OF 8

DATE: 10/21/00
 DRAWN BY: SK
 ENGINEER: Condo, Inc.

CLIENT:
 S.L.G. DEVELOPMENT



POINT	EASTING	NORTHING
1	45691.6372	131124.1263
2	45691.6372	131124.1263
3	45691.6372	131124.1263
4	45691.6372	131124.1263
5	45691.6372	131124.1263
6	45691.6372	131124.1263
7	45691.6372	131124.1263
8	45691.6372	131124.1263
9	45691.6372	131124.1263
10	45691.6372	131124.1263
11	45691.6372	131124.1263
12	45691.6372	131124.1263
13	45691.6372	131124.1263
14	45691.6372	131124.1263
15	45691.6372	131124.1263
16	45691.6372	131124.1263
17	45691.6372	131124.1263
18	45691.6372	131124.1263
19	45691.6372	131124.1263
20	45691.6372	131124.1263
21	45691.6372	131124.1263
22	45691.6372	131124.1263
23	45691.6372	131124.1263
24	45691.6372	131124.1263
25	45691.6372	131124.1263
26	45691.6372	131124.1263
27	45691.6372	131124.1263
28	45691.6372	131124.1263
29	45691.6372	131124.1263
30	45691.6372	131124.1263
31	45691.6372	131124.1263
32	45691.6372	131124.1263
33	45691.6372	131124.1263
34	45691.6372	131124.1263
35	45691.6372	131124.1263
36	45691.6372	131124.1263
37	45691.6372	131124.1263
38	45691.6372	131124.1263
39	45691.6372	131124.1263
40	45691.6372	131124.1263
41	45691.6372	131124.1263
42	45691.6372	131124.1263
43	45691.6372	131124.1263
44	45691.6372	131124.1263
45	45691.6372	131124.1263
46	45691.6372	131124.1263
47	45691.6372	131124.1263
48	45691.6372	131124.1263
49	45691.6372	131124.1263
50	45691.6372	131124.1263
51	45691.6372	131124.1263
52	45691.6372	131124.1263
53	45691.6372	131124.1263
54	45691.6372	131124.1263
55	45691.6372	131124.1263
56	45691.6372	131124.1263
57	45691.6372	131124.1263
58	45691.6372	131124.1263
59	45691.6372	131124.1263
60	45691.6372	131124.1263
61	45691.6372	131124.1263
62	45691.6372	131124.1263
63	45691.6372	131124.1263
64	45691.6372	131124.1263
65	45691.6372	131124.1263
66	45691.6372	131124.1263
67	45691.6372	131124.1263
68	45691.6372	131124.1263
69	45691.6372	131124.1263
70	45691.6372	131124.1263
71	45691.6372	131124.1263
72	45691.6372	131124.1263
73	45691.6372	131124.1263
74	45691.6372	131124.1263
75	45691.6372	131124.1263
76	45691.6372	131124.1263
77	45691.6372	131124.1263
78	45691.6372	131124.1263
79	45691.6372	131124.1263
80	45691.6372	131124.1263
81	45691.6372	131124.1263
82	45691.6372	131124.1263
83	45691.6372	131124.1263
84	45691.6372	131124.1263
85	45691.6372	131124.1263
86	45691.6372	131124.1263
87	45691.6372	131124.1263
88	45691.6372	131124.1263
89	45691.6372	131124.1263
90	45691.6372	131124.1263
91	45691.6372	131124.1263
92	45691.6372	131124.1263
93	45691.6372	131124.1263
94	45691.6372	131124.1263
95	45691.6372	131124.1263
96	45691.6372	131124.1263
97	45691.6372	131124.1263
98	45691.6372	131124.1263
99	45691.6372	131124.1263
100	45691.6372	131124.1263

POINT	EASTING	NORTHING
101	45691.6372	131124.1263
102	45691.6372	131124.1263
103	45691.6372	131124.1263
104	45691.6372	131124.1263
105	45691.6372	131124.1263
106	45691.6372	131124.1263
107	45691.6372	131124.1263
108	45691.6372	131124.1263
109	45691.6372	131124.1263
110	45691.6372	131124.1263
111	45691.6372	131124.1263
112	45691.6372	131124.1263
113	45691.6372	131124.1263
114	45691.6372	131124.1263
115	45691.6372	131124.1263
116	45691.6372	131124.1263
117	45691.6372	131124.1263
118	45691.6372	131124.1263
119	45691.6372	131124.1263
120	45691.6372	131124.1263
121	45691.6372	131124.1263
122	45691.6372	131124.1263
123	45691.6372	131124.1263
124	45691.6372	131124.1263
125	45691.6372	131124.1263
126	45691.6372	131124.1263
127	45691.6372	131124.1263
128	45691.6372	131124.1263
129	45691.6372	131124.1263
130	45691.6372	131124.1263
131	45691.6372	131124.1263
132	45691.6372	131124.1263
133	45691.6372	131124.1263
134	45691.6372	131124.1263
135	45691.6372	131124.1263
136	45691.6372	131124.1263
137	45691.6372	131124.1263
138	45691.6372	131124.1263
139	45691.6372	131124.1263
140	45691.6372	131124.1263
141	45691.6372	131124.1263
142	45691.6372	131124.1263
143	45691.6372	131124.1263
144	45691.6372	131124.1263
145	45691.6372	131124.1263
146	45691.6372	131124.1263
147	45691.6372	131124.1263
148	45691.6372	131124.1263
149	45691.6372	131124.1263
150	45691.6372	131124.1263
151	45691.6372	131124.1263
152	45691.6372	131124.1263
153	45691.6372	131124.1263
154	45691.6372	131124.1263
155	45691.6372	131124.1263
156	45691.6372	131124.1263
157	45691.6372	131124.1263
158	45691.6372	131124.1263
159	45691.6372	131124.1263
160	45691.6372	131124.1263
161	45691.6372	131124.1263
162	45691.6372	131124.1263
163	45691.6372	131124.1263
164	45691.6372	131124.1263
165	45691.6372	131124.1263
166	45691.6372	131124.1263
167	45691.6372	131124.1263
168	45691.6372	131124.1263
169	45691.6372	131124.1263
170	45691.6372	131124.1263
171	45691.6372	131124.1263
172	45691.6372	131124.1263
173	45691.6372	131124.1263
174	45691.6372	131124.1263
175	45691.6372	131124.1263
176	45691.6372	131124.1263
177	45691.6372	131124.1263
178	45691.6372	131124.1263
179	45691.6372	131124.1263
180	45691.6372	131124.1263
181	45691.6372	131124.1263
182	45691.6372	131124.1263
183	45691.6372	131124.1263
184	45691.6372	131124.1263
185	45691.6372	131124.1263
186	45691.6372	131124.1263
187	45691.6372	131124.1263
188	45691.6372	131124.1263
189	45691.6372	131124.1263
190	45691.6372	131124.1263
191	45691.6372	131124.1263
192	45691.6372	131124.1263
193	45691.6372	131124.1263
194	45691.6372	131124.1263
195	45691.6372	131124.1263
196	45691.6372	131124.1263
197	45691.6372	131124.1263
198	45691.6372	131124.1263
199	45691.6372	131124.1263
200	45691.6372	131124.1263

POINT	EASTING	NORTHING
201	45691.6372	131124.1263
202	45691.6372	131124.1263
203	45691.6372	131124.1263
204	45691.6372	131124.1263
205	45691.6372	131124.1263
206	45691.6372	131124.1263
207	45691.6372	131124.1263
208	45691.6372	131124.1263
209	45691.6372	131124.1263
210	45691.6372	131124.1263
211	45691.6372	131124.1263
212	45691.6372	131124.1263
213	45691.6372	131124.1263
214	45691.6372	131124.1263
215	45691.6372	131124.1263
216	45691.6372	131124.1263
217	45691.6372	131124.1263
218	45691.6372	131124.1263
219	45691.6372	131124.1263
220	45691.6372	131124.1263
221	45691.6372	131124.1263
222	45691.6372	131124.1263
223	45691.6372	131124.1263
224	45691.6372	131124.1263
225	45691.6372	131124.1263
226	45691.6372	131124.1263
227	45691.6372	131124.1263
228	45691.6372	131124.1263
229	45691.6372	131124.1263
230	45691.6372	131124.1263
231	45691.6372	131124.1263
232	45691.6372	131124.1263
233	45691.6372	131124.1263
234	45691.6372	131124.1263
235	45691.6372	131124.1263
236	45691.6372	131124.1263
237	45691.6372	131124.1263
238	45691.6372	131124.1263
239	45691.6372	131124.1263
240	45691.6372	131124.1263
241	45691.6372	131124.1263
242	45691.6372	131124.1263
243	45691.6372	131124.1263
244	45691.6372	131124.1263
245	45691.6372	131124.1263
246	45691.6372	131124.1263
247	45691.6372	131124.1263
248	45691.6372	131124.1263
249	45691.6372	131124.1263
250	45691.6372	131124.1263



COORDINATES
ORCHARD, HILTZ & McCORMICK, INC.
3485 Shoberl Road
Livonia, MI 48150
(734) 933-0311

EXHIBIT "B" TO THE MASTER DEED OF
NICHWAGH RIDGE CONDOMINIUM
LIVINGSTON COUNTY CO-CONDOMINIUM
SUBMISISON PLAY NO. 286

CLIENT: OLG DEVELOPMENT
DATE: 07/03/03
DRAWN BY: JH
DYNAMIC Curve, Survey
SHEET 9 OF 8
JOB NO. 615-01-014

DATE: 07/03/03
DRAWN BY: JH
DYNAMIC Curve, Survey
SHEET 9 OF 8
JOB NO. 615-01-014